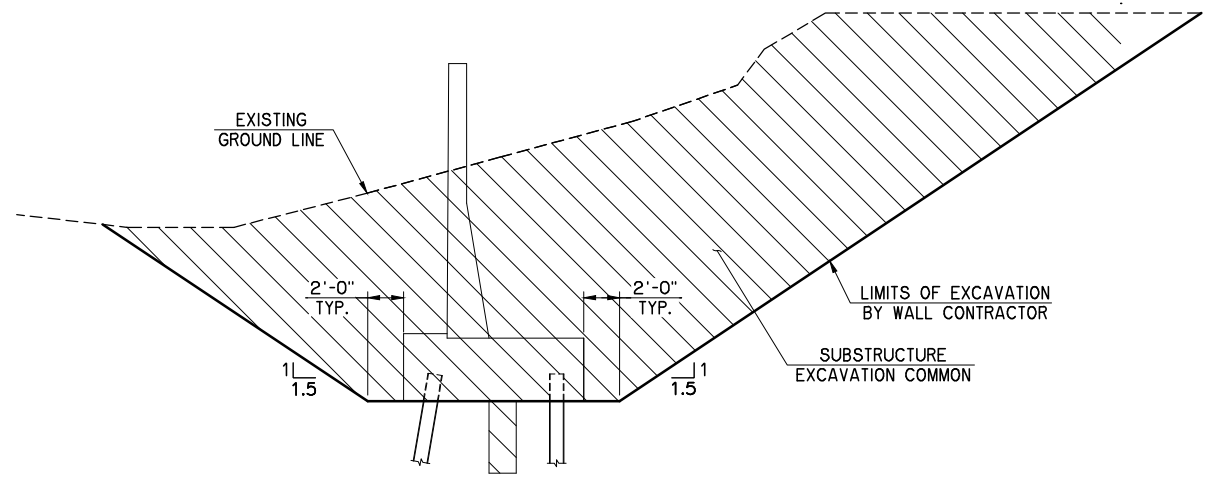
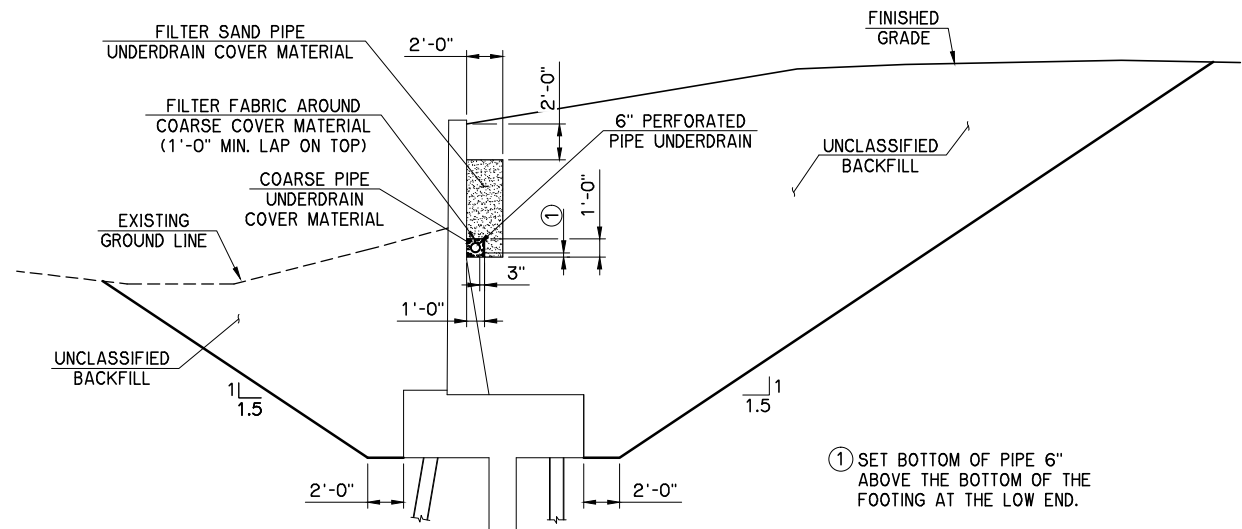


REVISIONS		
REV. NO.	DESCRIPTION	DATE

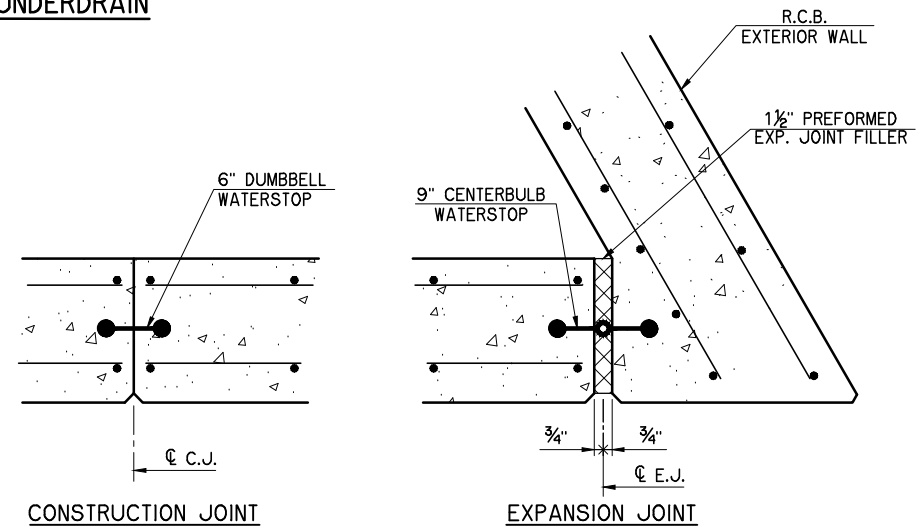


TYPICAL EXCAVATION SECTION
TYPE I SHOWN
(TYPE II & III SIMILAR)



PIPE UNDERDRAIN

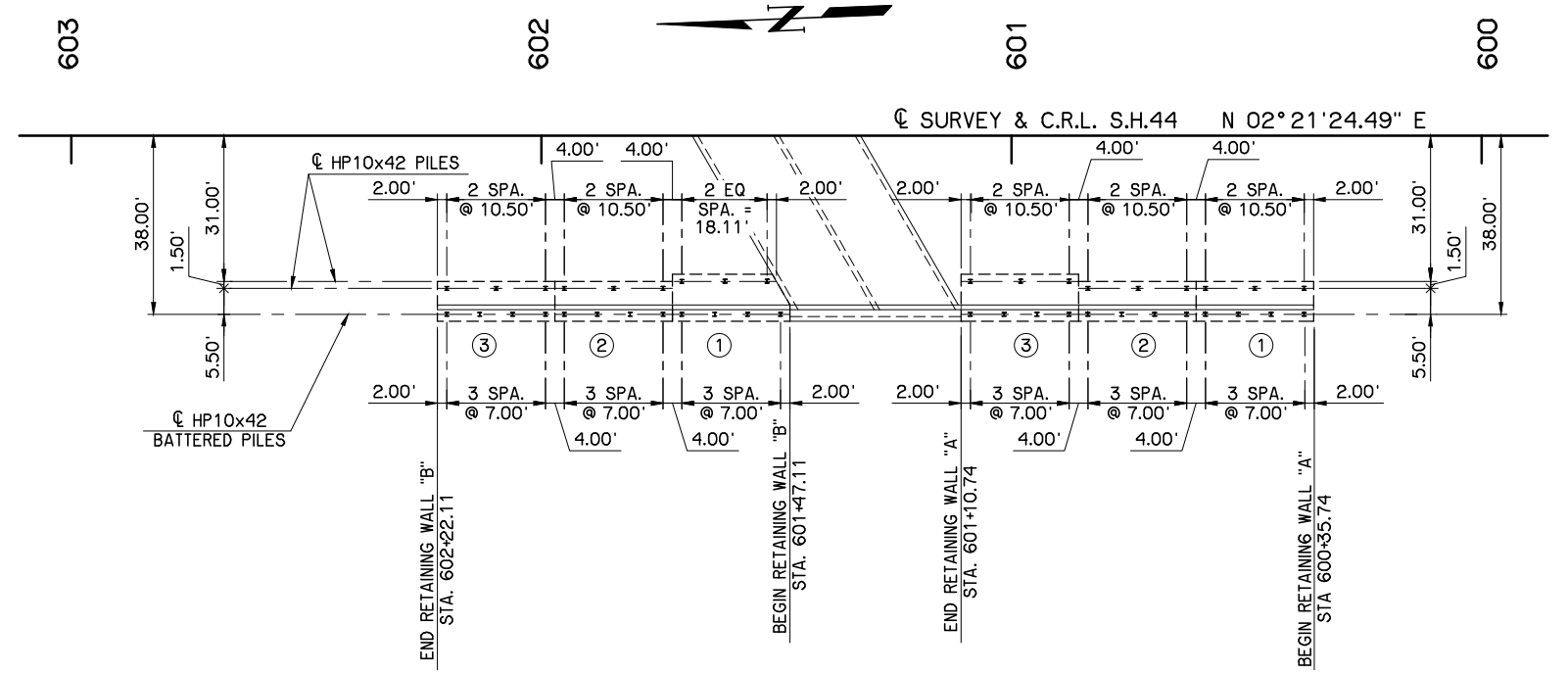
① SET BOTTOM OF PIPE 6" ABOVE THE BOTTOM OF THE FOOTING AT THE LOW END.



RETAINING WALL JOINT DETAILS

SEE PLAN AND ELEVATION ON SHEET 16 FOR JOINT LOCATIONS

NOTE: WATERSTOP AND EXP. JOINT FILLER WILL BE PLACED THE FULL HEIGHT OF WALL. COST WILL BE INCLUDED IN OTHER ITEMS OF WORK.



SUBSTRUCTURE LAYOUT

RETAINING WALL "A" QUANTITIES									
PANEL NO.	PAY ITEMS				NON-PAY ITEMS				
	RETAINING WALL (S.Y.)	PILES FURNISHED (HP10x42) (L.F.)	PILES DRIVEN (HP10x42) (L.F.)	HANDRAILING (L.F.)	SUBSTRUCTURE EXCAVATION COMMON (C.Y.)	CLASS A CONCRETE (C.Y.)	REINFORCING STEEL (LB.)	6" PERF. PIPE UNDERDRAIN RND. (L.F.)	6" NON-PERF. PIPE UNDERDRAIN RND. (L.F.)
1	28.5	231	231	25.0	465	41.6	3,350	26.0	
2	32.6	231	231	25.0	325	43.3	3,640	26.0	
3	42.4	210	210	25.0	460	57.6	4,700	25.0	3.0
TOTALS	103.5	672	672	75.0	1,250	142.5	11,690	77.0	3.0

RETAINING WALL "B" QUANTITIES									
PANEL NO.	PAY ITEMS				NON-PAY ITEMS				
	RETAINING WALL (S.Y.)	PILES FURNISHED (HP10x42) (L.F.)	PILES DRIVEN (HP10x42) (L.F.)	HANDRAILING (L.F.)	SUBSTRUCTURE EXCAVATION COMMON (C.Y.)	CLASS A CONCRETE (C.Y.)	REINFORCING STEEL (LB.)	6" PERF. PIPE UNDERDRAIN RND. (L.F.)	6" NON-PERF. PIPE UNDERDRAIN RND. (L.F.)
1	42.4	298	298	25.0	365	56.0	4,610	25.0	3.0
2	32.6	333	333	25.0	275	43.3	3,640	26.0	
3	28.5	347	347	25.0	500	41.6	3,350	26.0	
TOTALS	103.5	978	978	75.0	1,140	140.9	11,600	77.0	3.0

S.H. 44 OVER DRY ELK CREEK		WASHITA COUNTY		Design	AFW
RETAINING WALL DETAILS SHEET 2 OF 3				Detail	DRB
				Check	AFW
STATE OF OKLAHOMA DEPARTMENT OF TRANSPORTATION JOB PIECE NO. 28774(O4)				WHITE ENGINEERING ASSOCIATES	
				SHEET NO. 19	

I:\Active\1220\DWG\Retaining wall details2.dwg, 2/22/2016 1:42:09 PM, Deanne